



Shielding Gas Outlet Kit

Part No: **HKSHIELDX4**

Argon/Argon Mix

HARRIS Shielding gas outlet Kit, 4 x 847Flow Regulator Stations, 25M of 18mm Polybutylene, fittings & Key Lock 825 Pressure Regulator. Achieve Gas economy and reduce cylinder rental. This do it yourself kit is Easy and Fast to install. Simple, Easy to follow instructions. The 825 Key Lock Regulator will ensure each cylinder or Pak is completely emptied, The 847 Flow Regulators are Key Lockable to ensure reliable tamper proof gas delivery- with no Start of run surging! **Great Savings!**

- ▶ 2ea 430265 Single Cylinder wall Bracket
- ▶ 1ea 825DT400 Model 825, Side Inlet, Key lockable 0-400kpa (nominally 350kpa for maximum economy), Adjustable for Argon or Argon/Mix
- ▶ 1ea KSTSRV400 Safety Relief Valve 440kpa
- ▶ 1ea 10ABSH2M+F 10mm diameter Flex Hose 2M Long (For Connecting Regulator to pipeline)
- ▶ 1ea 957AO Nipple for Hose to Bush to Elbow
- ▶ 1ea 01-2405 Bush ¼" to 1/2"
- ▶ 1ea HEP6.18 FEMALE WALL MOUNT Elbow to 18mm Poly
- ▶ 1ea HEPSC25.18 18mm Diameter x 25M Straight Coil
- ▶ 4ea HEP10.18 18mm Tees
- ▶ 6ea HEP5.18 18mm Elbows
- ▶ 30ea HEP60.18 18mm Sleeves
- ▶ 1ea HEP74 Poly Tube Cutter
- ▶ 4ea 8470207AGR0N Model 847 Flow Regulators complete with Isolation Valve & Mounting
- ▶ 3ea A825ES Keys for Key Lock Regulators

Buy locally for the best service & support



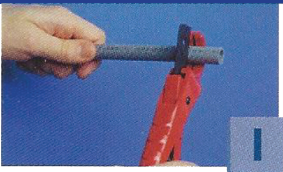
Part No: **HKSHIELDX4**

Assembly Instructions

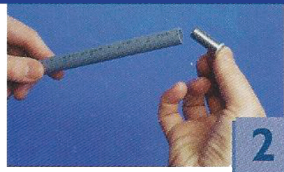
- #1 82 5T800AR47 Model 82 5 Keylock 0-800kpa Pressure Regulator set to 400 kpa. For Optimal use.
- #2 Fit Safety Relief Valve to Regulator outlet (preset to 800 kpa).
- #3 Fit Non Return Valve to outlet of Safety Relief Valve
- #4 2M of 10mm supply hose complete with 5/8" UNF fittings to connect between Non Return Valve and Wall Elbow (Using 957AO Nipple & 01-2405 Reducing Bush already assembled onto HEP6.18 Wall Elbow.)
- #5 Mount Wall Elbow adjacent to cylinder or pack storage, within 2M for hose to fit between, Cylinder Wall Brackets to be firmly secured.
- #6 Station with Isolation Valve to be fitted to wall or columns where required.
- #7 Run 18mm Polybutylene Tubing utilising Elbows & Tees as desired, make sure the Tube is cut square and the sleeves are installed prior to pushing the fittings together to the correct depth. Fittings do not require disassembly.

Attachment

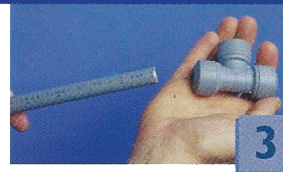
Joining Procedure - whichever type of fitting is used, the same type of joining procedure should be used. All fittings are pre-lubricated.



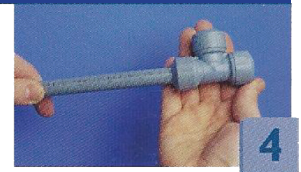
*Use only purpose designed pipe cutters
Cut the pipe at one of the insertion marks. Ensure the pipe end is free from burrs.*



Insert a Hep₂O[®] support sleeve into the pipe end.



Push the pipe firmly into the fitting. A secure joint has been made when the end of the cap has reached the next insertion mark on the pipe.



Tug back on the pipe to ensure the grab wedge engages correctly.

- #8 847 Flow Regulators with Swagelok connections: To fit 847 Flow Regulators onto work station: Hand Tighten Swagelok connection when on stub of work station, mark hex nut on one flat with permanent marker. Tighten Swagelok 1-1/4 to 1-1/2 turns to make seal gas tight. If the regulator is snapped off the wall mount the following 2 parts are needed: 4076264 (connects to wall mount) & 103CMC6-4N (connects to back of regulator)
- #9 A82 5ES Key to adjust Flow as required
- #10 Adhere labels as required

Additional Elbows, Tees, Tubing as well as 8470207 ARGON stations can be ordered as required. For larger installations with excess of 10 welders please consult **HARRIS** for a solution tailored to your requirements. We can also offer seamless cylinder or pack change overs as well as alarms and monitoring.

**Harris Products Group
HGE PTY LTD**

Brisbane | Melbourne | Perth | New Zealand
14 Queensland Rd, Darra, QLD 4076
Phone: (07) 3375 3670 | Fax: (07) 3375 3620

Email: sales@hgea.com.au

www.harrisproductsgroup.com.au

Email NZ: sales@harrisnz.com

www.harrisproductsgroup.co.nz